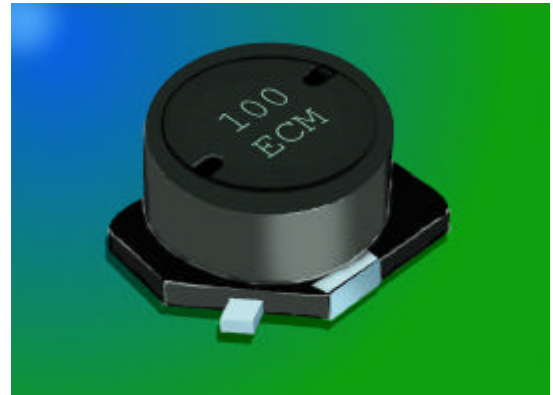


## EC63/73/75 Series

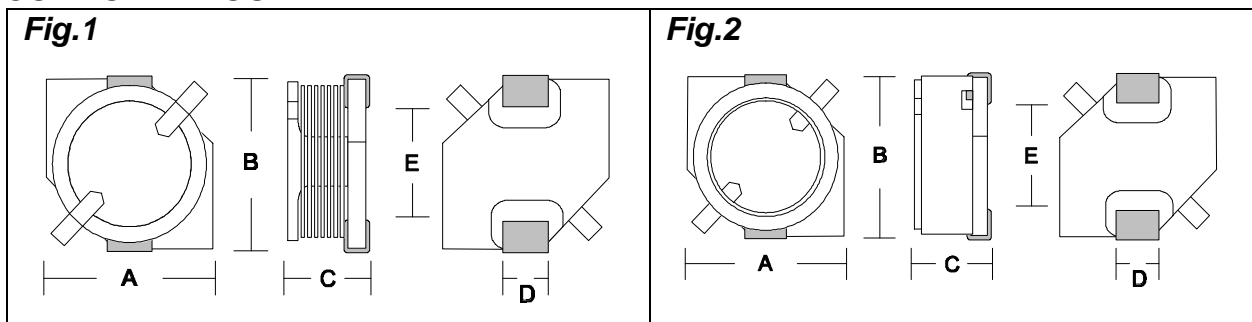
- Small PCB Area
- Low 3.0mm Height Option
- Up to 3 Amp
- Low Cost
- Typical Reel Size 1000pcs



The EC63/73/75 surface mount inductors comes in three package sizes with a high profile as low as 3.0mm. The **EC75C** (shown above) is ferrite shielded, as is both the **EC73C** and **EC63C**. The **EC73F** and **EC75F** are open construction. The whole range offers excellent *I<sub>sat</sub>* characteristics for their given size along with excellent temperature endurance.

Suitable applications include power supplies for VTR, OA equipment, LCD display, and DC/DC converters.

### COMPONENT OUTLINE

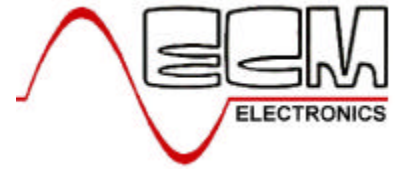


(1 = EC73F/75F Type, 2 = EC63C/73C/75C Type)

### DIMENSIONS (mm)

ECM Type	Inductance Range	Outline (Fig.)	A (mm)	B	C	D	E
EC73F	1.0uH~100uH	1	7.4	7.4	3.5	2.1	5.4
EC75F	1.0uH~470uH	1	7.4	7.4	5.5	2.1	5.4
EC63C	10.0uH~330uH	2	6.2	6.2	3.0	1.9	3.0
EC73C	1.0uH~100uH	2	7.4	7.4	3.5	2.1	5.4
EC75C	1.0uH~560uH	2	7.4	7.4	5.5	2.1	5.4

# ECM Surface Mount Power Inductors



<b>ECM Part</b>	<b>L (mH)</b>	<b>Tol %</b>	<b>R<sub>DC</sub> MAX (W)</b>	<b>I<sub>DC</sub> I<sub>N</sub> (A)</b>
-----------------	---------------	--------------	-------------------------------	---

## EC73F Series

EC73F-1R0	1.0 @1.0 kHz	M	0.022	2.88
EC73F-1R5	1.5 @1.0 kHz	M	0.026	2.67
EC73F-3R3	3.3 @1.0 kHz	M	0.041	2.08
EC73F-4R7	4.7 @1.0 kHz	M	0.049	1.92
EC73F-6R8	6.8 @1.0 kHz	M	0.067	1.60
EC73F-100	10 @1.0 kHz	M	0.085	1.41
EC73F-120	12 @1.0 kHz	M	0.10	1.28
EC73F-150	15 @1.0 kHz	M	0.13	1.12
EC73F-180	18 @1.0 kHz	M	0.16	1.00
EC73F-220	22 @1.0 kHz	M	0.18	0.93
EC73F-270	27 @1.0 kHz	M	0.24	0.80
EC73F-330	33 @1.0 kHz	M	0.29	0.72
EC73F-390	39 @1.0 kHz	M	0.34	0.66
EC73F-470	47 @1.0 kHz	M	0.41	0.59
EC73F-560	56 @1.0 kHz	M	0.48	0.55
EC73F-680	68 @1.0 kHz	M	0.60	0.49
EC73F-820	82 @1.0 kHz	M	0.71	0.44
EC73F-101	100 @1.0 kHz	M	0.95	0.38

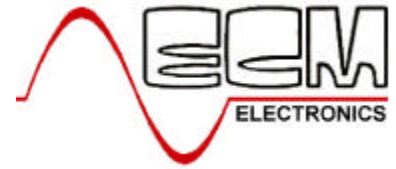
## EC75F Series

EC75F-1R0	1.0 @1.0 kHz	M	0.023	2.88
EC75F-1R5	1.5 @1.0 kHz	M	0.028	2.56
EC75F-3R3	3.3 @1.0 kHz	M	0.038	2.16
EC75F-4R7	4.7 @1.0 kHz	M	0.049	1.88
EC75F-6R8	6.8 @1.0 kHz	M	0.060	1.68
EC75F-100	10 @1.0 kHz	M	0.070	1.56
EC75F-120	12 @1.0 kHz	M	0.080	1.44
EC75F-150	15 @1.0 kHz	M	0.090	1.36
EC75F-180	18 @1.0 kHz	M	0.10	1.28
EC75F-220	22 @1.0 kHz	M	0.12	1.17
EC75F-270	27 @1.0 kHz	M	0.14	1.07
EC75F-330	33 @1.0 kHz	M	0.16	1.00
EC75F-390	39 @1.0 kHz	M	0.19	0.91
EC75F-470	47 @1.0 kHz	M	0.22	0.84
EC75F-560	56 @1.0 kHz	M	0.29	0.72
EC75F-680	68 @1.0 kHz	M	0.34	0.66
EC75F-820	82 @1.0 kHz	M	0.46	0.58
EC75F-101	100 @1.0 kHz	M	0.55	0.51
EC75F-121	120 @1.0 kHz	M	0.67	0.42
EC75F-151	150 @1.0 kHz	M	0.90	0.37
EC75F-181	180 @1.0 kHz	M	1.05	0.35
EC75F-221	220 @1.0 kHz	M	1.35	0.29
EC75F-271	270 @1.0 kHz	M	1.55	0.28
EC75F-331	330 @1.0 kHz	M	2.05	0.23
EC75F-391	390 @1.0 kHz	M	2.30	0.215
EC75F-471	470 @1.0 kHz	M	2.60	0.195

ECM Electronics Limited, Penmaen House, Ashington, West Sussex, RH20 3JR, UK  
 Tel: +44(0)1903 892810: Fax: +44(0)1903 892738. Email: [ecm@ecmelectronics.co.uk](mailto:ecm@ecmelectronics.co.uk)

Although we have attempted to accurately reflect the products we market. ECM reserve the right without prior notice to discontinue any product or make design changes we believe necessary.

# ECM Surface Mount Power Inductors



<b>ECM Part</b>	<b>L (mH)</b>	<b>Tol %</b>	<b>R<sub>DC</sub> MAX (W)</b>	<b>I<sub>DC</sub> I<sub>N</sub> (A)</b>
-----------------	---------------	--------------	-------------------------------	---

## EC63C Series

EC63C-100	10 @1.0 kHz	M	0.15	1.10
EC63C-120	12 @1.0 kHz	M	0.20	1.00
EC63C-150	15 @1.0 kHz	M	0.23	0.90
EC63C-180	18 @1.0 kHz	M	0.27	0.80
EC63C-220	22 @1.0 kHz	M	0.34	0.74
EC63C-270	27 @1.0 kHz	M	0.38	0.66
EC63C-330	33 @1.0 kHz	M	0.45	0.59
EC63C-390	39 @1.0 kHz	M	0.49	0.54
EC63C-470	47 @1.0 kHz	M	0.69	0.50
EC63C-560	56 @1.0 kHz	M	0.78	0.46
EC63C-680	68 @1.0 kHz	M	1.07	0.42
EC63C-820	82 @1.0 kHz	M	1.21	0.38
EC63C-101	100 @1.0 kHz	M	1.39	0.34
EC63C-121	120 @1.0 kHz	M	1.90	0.31
EC63C-151	150 @1.0 kHz	M	2.18	0.28
EC63C-181	180 @1.0 kHz	M	2.77	0.26
EC63C-221	220 @1.0 kHz	M	3.12	0.23
EC63C-271	270 @1.0 kHz	M	4.38	0.22
EC63C-331	300 @1.0 kHz	M	4.94	0.19

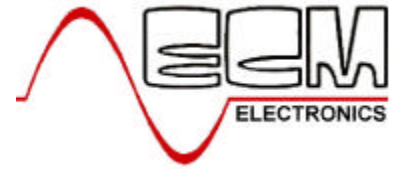
## EC73C Series

EC73C-1R0	1.0 @1.0 kHz	M	0.019	3.12
EC73C-1R5	1.5 @1.0 kHz	M	0.023	2.85
EC73C-3R3	3.3 @1.0 kHz	M	0.035	2.26
EC73C-4R7	4.7 @1.0 kHz	M	0.043	1.96
EC73C-6R8	6.8 @1.0 kHz	M	0.055	1.76
EC73C-100	10 @1.0 kHz	M	0.08	1.34
EC73C-120	12 @1.0 kHz	M	0.09	1.23
EC73C-150	15 @1.0 kHz	M	0.12	1.09
EC73C-180	18 @1.0 kHz	M	0.13	0.99
EC73C-220	22 @1.0 kHz	M	0.15	0.90
EC73C-270	27 @1.0 kHz	M	0.21	0.81
EC73C-330	33 @1.0 kHz	M	0.25	0.72
EC73C-390	39 @1.0 kHz	M	0.31	0.67
EC73C-470	47 @1.0 kHz	M	0.35	0.60
EC73C-560	56 @1.0 kHz	M	0.43	0.55
EC73C-680	68 @1.0 kHz	M	0.52	0.50
EC73C-820	82 @1.0 kHz	M	0.60	0.46
EC73C-101	100 @1.0 kHz	M	0.79	0.41

ECM Electronics Limited, Penmaen House, Ashington, West Sussex, RH20 3JR, UK  
 Tel: +44(0)1903 892810: Fax: +44(0)1903 892738. Email: [ecm@ecmelectronics.co.uk](mailto:ecm@ecmelectronics.co.uk)

Although we have attempted to accurately reflect the products we market. ECM reserve the right without prior notice to discontinue any product or make design changes we believe necessary.

# ECM Surface Mount Power Inductors



## EC75C Series

EC75C-1R0	1.0 @1.0 kHz	M	0.023	2.88
EC75C-1R5	1.5 @1.0 kHz	M	0.027	2.61
EC75C-3R3	3.3 @1.0 kHz	M	0.035	2.28
EC75C-4R7	4.7 @1.0 kHz	M	0.041	2.08
EC75C-6R8	6.8 @1.0 kHz	M	0.047	1.94
EC75C-100	10 @1.0 kHz	M	0.050	1.68
EC75C-120	12 @1.0 kHz	M	0.070	1.54
EC75C-150	15 @1.0 kHz	M	0.080	1.39
EC75C-180	18 @1.0 kHz	M	0.090	1.26
EC75C-220	22 @1.0 kHz	M	0.11	1.13
EC75C-270	27 @1.0 kHz	M	0.15	1.02
EC75C-330	33 @1.0 kHz	M	0.17	0.84
EC75C-390	39 @1.0 kHz	M	0.18	0.80
EC75C-470	47 @1.0 kHz	M	0.20	0.76
EC75C-560	56 @1.0 kHz	M	0.28	0.64
EC75C-680	68 @1.0 kHz	M	0.32	0.60
EC75C-820	82 @1.0 kHz	M	0.35	0.57
EC75C-101	100 @1.0 kHz	M	0.40	0.50
EC75C-121	120 @1.0 kHz	M	0.44	0.47
EC75C-151	150 @1.0 kHz	M	0.73	0.40
EC75C-181	180 @1.0 kHz	M	0.78	0.39
EC75C-221	220 @1.0 kHz	M	0.94	0.33
EC75C-271	270 @1.0 kHz	M	1.25	0.31
EC75C-331	330 @1.0 kHz	M	1.40	0.28
EC75C-391	390 @1.0 kHz	M	1.52	0.27
EC75C-471	470 @1.0 kHz	M	1.70	0.25
EC75C-561	560 @1.0 kHz	M	2.39	0.22

**TOLERANCE; M=20%**

ECM Electronics Limited, Penmaen House, Ashington, West Sussex, RH20 3JR, UK  
Tel: +44(0)1903 892810: Fax: +44(0)1903 892738. Email: [ecm@ecmelectronics.co.uk](mailto:ecm@ecmelectronics.co.uk)

Although we have attempted to accurately reflect the products we market. ECM reserve the right without prior notice to discontinue any product or make design changes we believe necessary.